



North East London

North East London Integrated Care System & City and Hackney Place based Partnership

November 2022

City and Hackney Place based Partnership

Purpose of this briefing

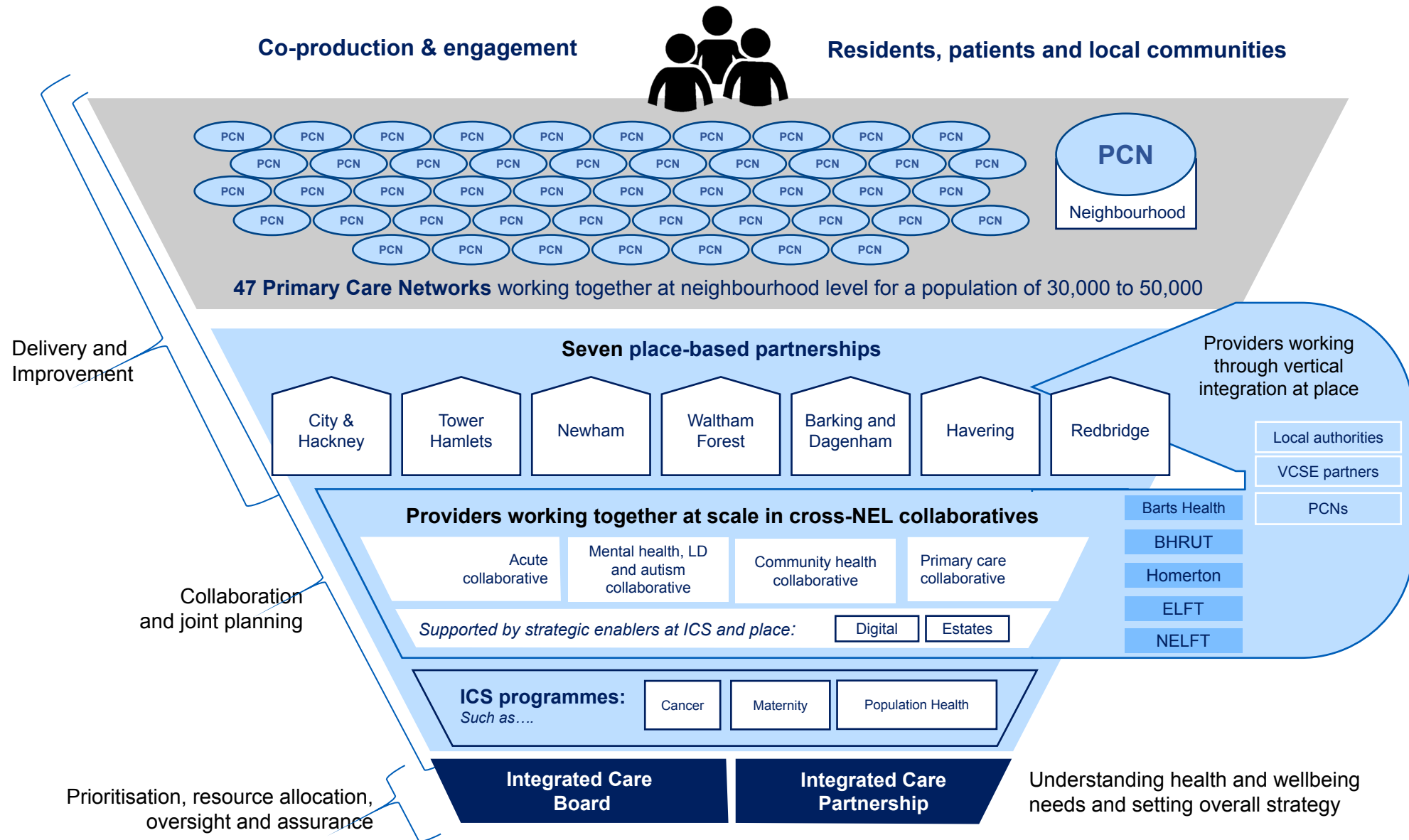
- This briefing provides information for staff, service users, and community organisations working in City and Hackney
- It explains recent changes to the structure of the NHS, and how this will affect local NHS services and partnership work between local organisations
- It also explains how health and care organisations are working together in City and Hackney to improve care for residents and the priorities for this improvement work

What changes are happening to the structure of the NHS locally?

- In July 2022, new legislation came into force (in England) to support different parts of the NHS in local areas to work more closely in partnership, with the aim of more effectively meeting the health and care needs of local residents. These legislative changes mainly affect the organisations that were responsible for planning and funding health services on behalf of local populations (previously called Clinical Commissioning Groups)
- All of the health and care organisations in North East London have been collaborating and making joint plans as [East London Health and Care Partnership](#) for several years, in order to address the most pressing health problems that affect the approximately 2.2m residents of North East London – this collaboration was previously called a Sustainability and Transformation Partnership (STP) and has been known more recently as an [Integrated Care System \(ICS\)](#)
- In April last year, City and Hackney's NHS Clinical Commissioning Group merged with six other local CCGs to form NHS North East London Clinical Commissioning Group, covering eight local authority areas across east London
- On July 1st this year, NHS North East London Clinical Commissioning Group (CCG) was replaced by a new organisation with slightly different powers and responsibilities, NHS North East London Integrated Care Board (ICB). The new organisation is called [NHS North East London](#). The staff who worked in North East London CCG have transferred to the new ICB. The [ICB](#) enables and supports the work of the [Integrated Care System](#)
- Local NHS organisations, the City of London and the London Borough of Hackney have been working in close partnership for several years and the new legislation provides additional flexibilities to further support joint working between NHS bodies and local authorities

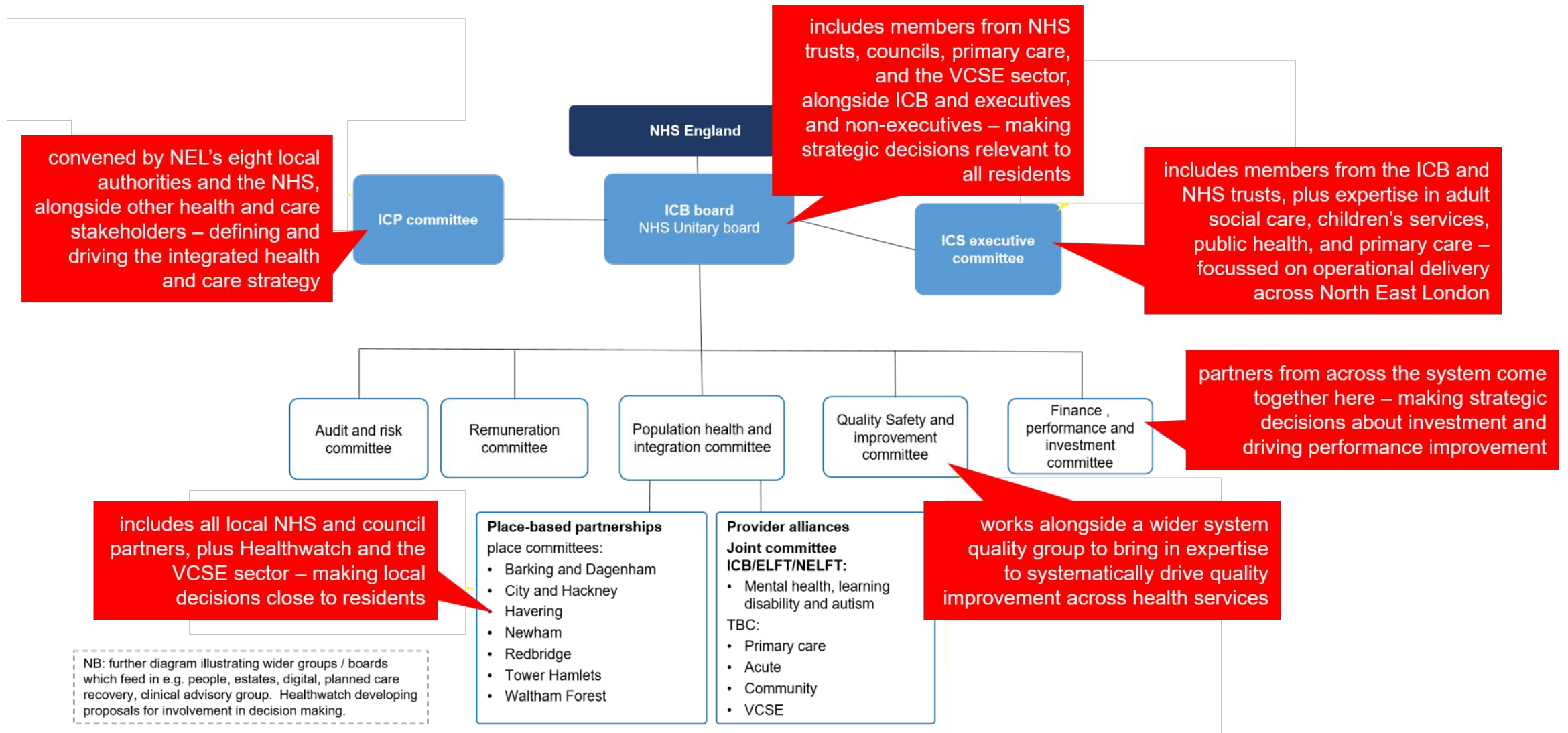
How will NHS organisations operate differently under the ICS?

- The recent legislation builds on existing collaboration by ensuring that all NHS bodies now have an explicit duty to work together to improve the health of local populations and to reduce health inequalities
- Whereas in the past it was CCGs that were responsible for planning for the needs of the population, in the ICS there will be three different levels of “population health’ focus where joint work will take place between all NHS organisations and partners – at [Neighbourhood](#) level (with a population of 30-50K people), at [Place](#) level (aligning with local authority footprints, with populations of approximate 300K), and at [ICS](#) level (in North East London approximately 2.2m people) (diagram on page 5)
- Alongside this, the organisations that provide similar types of care (hospitals, mental health trusts and primary care organisations) will work together collectively at scale as [provider collaboratives](#) for specific purposes such as to reduce variations in outcomes for patients across North East London, to jointly address shared challenges such as recruitment and retention of certain workforce roles, and to tackle problems at scale such as working to reduce waiting times for hospital procedures as a result of the COVID pandemic.
- The health organisations in City and Hackney are already operating as a [Place Based Partnership](#) within North East London ICS, working jointly with the local authorities and the voluntary sector and community groups. The partnership board was previously called the Integrated Care Partnership Board, it is now known as [City and Hackney Health and Care Board](#).
- Individual health and care organisations in City and Hackney remain legally responsible for delivery of services to residents, but the partnership focuses on joint collaboration to integrate services and better meet the needs of the local population and address health inequalities. The priorities for the partnership have been drawn from the Health and Wellbeing strategies of the two local authorities and the priorities of the Integrated Care System. The priorities are delivered by the partnership through an [Integrated Delivery Plan](#)



How the new Integrated Care System will operate in North East London

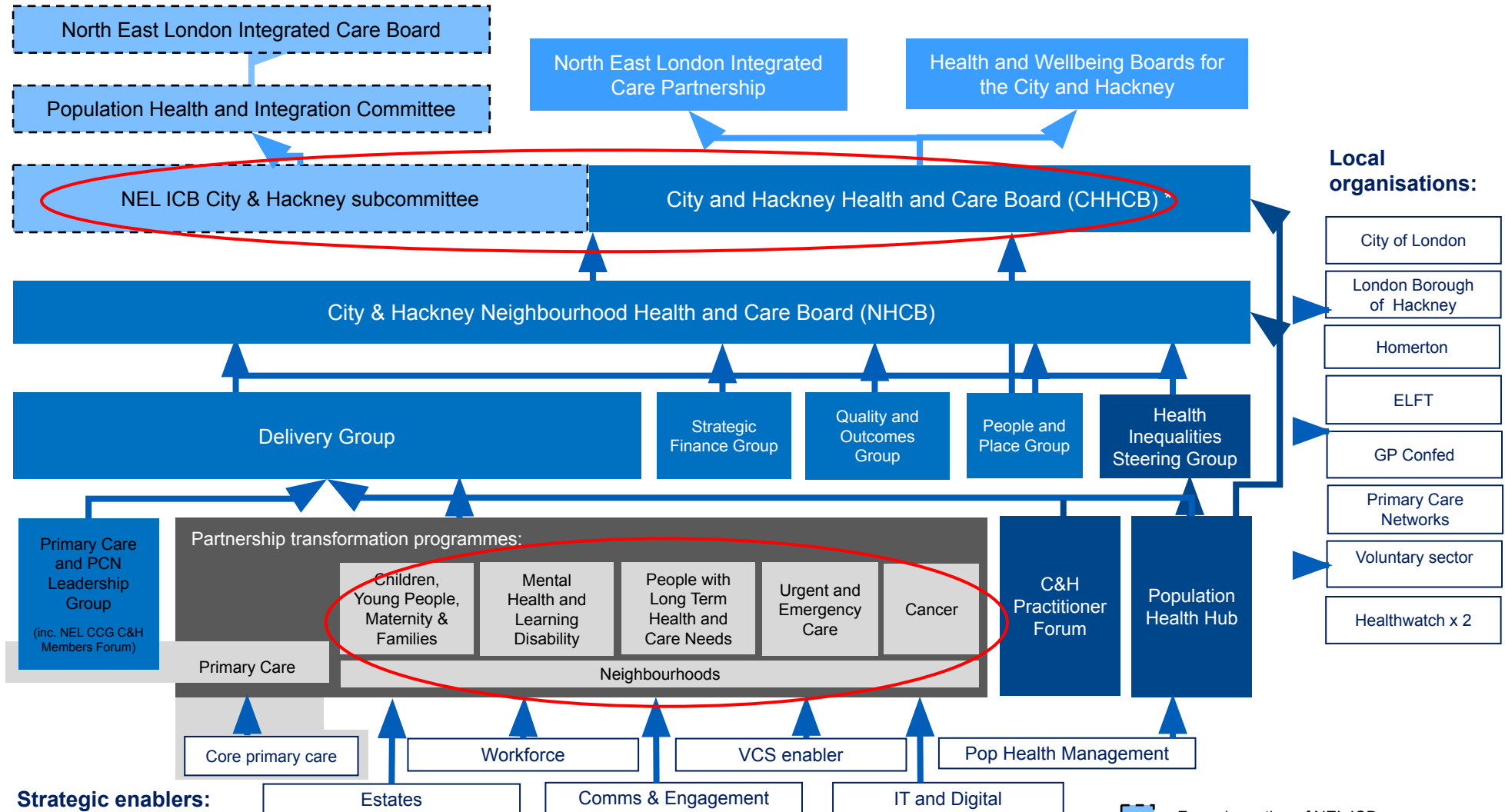
Overall Governance Structure in NEL ICS



City and Hackney Place based Partnership

- City and Hackney senior level board is the **City and Hackney Health and Care Board (CHHCB)**.
- This is co-chaired by Cllr Chris Kennedy from Hackney and Cllr Helen Fentiman from the City of London.
- Partners in City and Hackney have developed a set of strategic priorities that will guide our work going forward. These are included in the slides below.
- The key senior leadership roles for City and Hackney are
 - Homerton CEO (Louise Ashley)
 - Partnership Clinical Lead (Stephanie Coughlin)
 - Partnership Delivery Director (Nina Griffith).

City and Hackney's proposed Place-based Partnership governance within NEL ICS



- The **City and Hackney Health and Care Board** operates under a 'committees in common' structure with sub-committees from both the City of London Corporation and the London Borough of Hackney, allowing for delegated decision making for pooled budgets.

Red circle highlights changes post 1st July

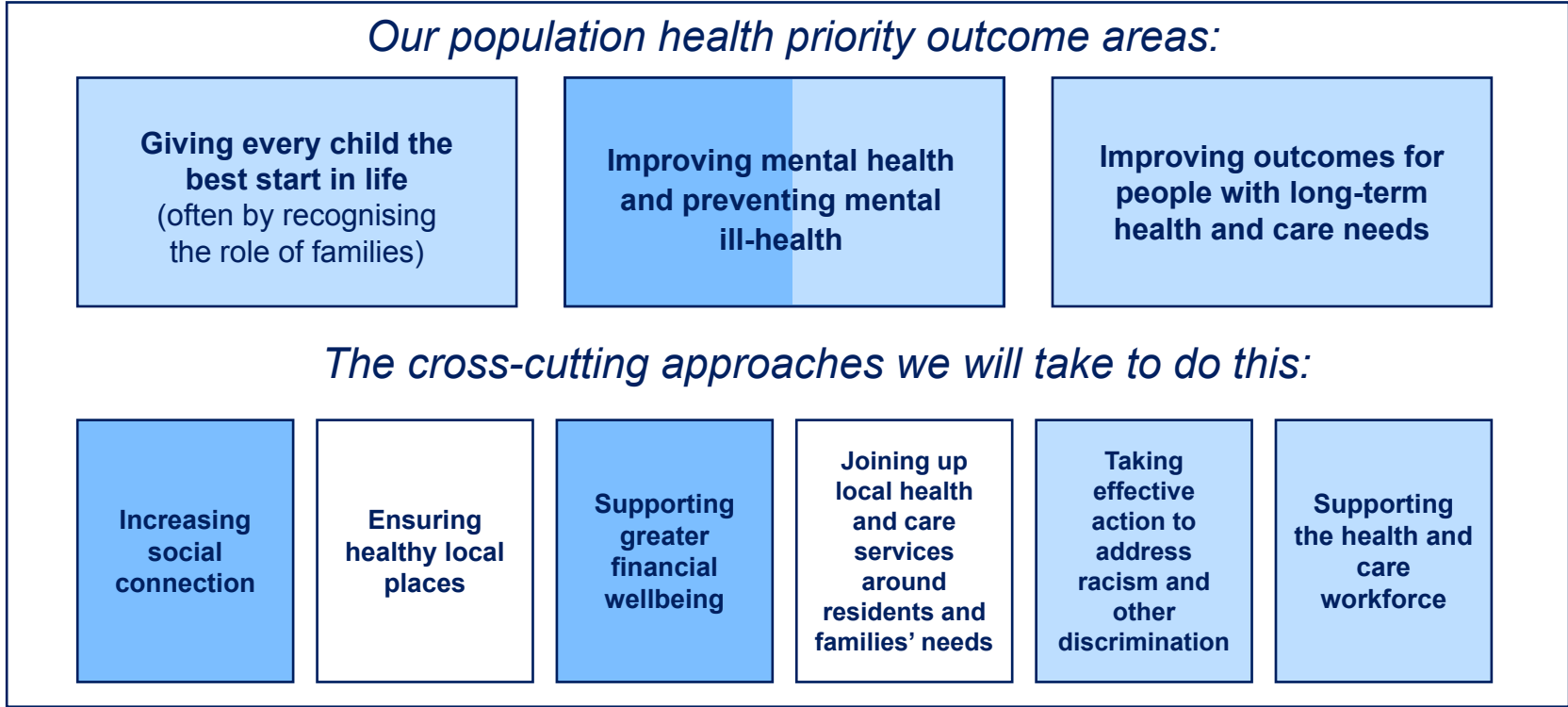
= Formal meeting of NEL ICB relating to City and Hackney PBP

= Formal meeting of the City and Hackney Place-based Partnership

= Support meeting / function to the City and Hackney Place-based Partnership

City and Hackney priorities

“Working together with our residents to improve health and care, address health inequalities and make City and Hackney thrive”



These priorities are drawn from local Health and Wellbeing Strategies and priorities of the wider ICS:

=Hackney HWB focus area
 = Hackney HWB specific ‘lenses’: (approaches to reduce health inequalities)
 = NEL ICS four partnership priority areas
 = reflecting long term C&H partnership ambitions

City and Hackney Integrated Delivery Plan

We have developed an Integrated Delivery Plan which sets out what we will do as a partnership to deliver the priorities – the following are the Big Ticket Items within this plan:

- Delivery of our Neighbourhoods Model (see next slide)
- Support for children with Special Education Needs
- Whole system approach to emotional and mental well being for children
- Increasing uptake of vaccinations and immunisations
- Improving discharge from hospital
- Improving outcomes for people who are homeless or vulnerably housed (including asylum seekers)
- Improving outcomes for people with Serious Mental Illness (SMI)
- Improved prevention and management of long term conditions
- Implementing a Personalised Care approach

City and Hackney's eight Neighbourhoods

